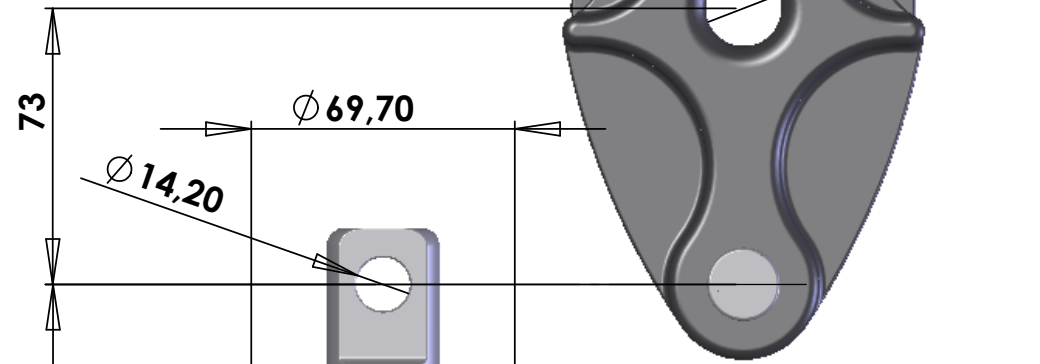
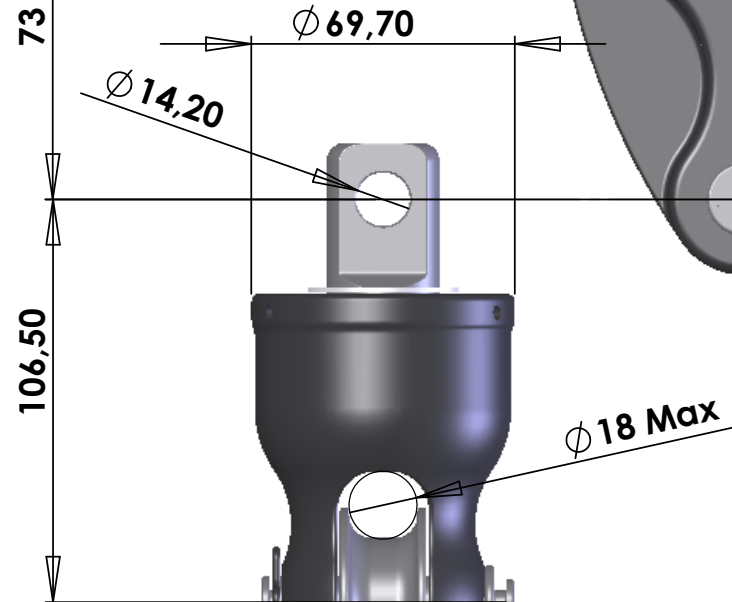


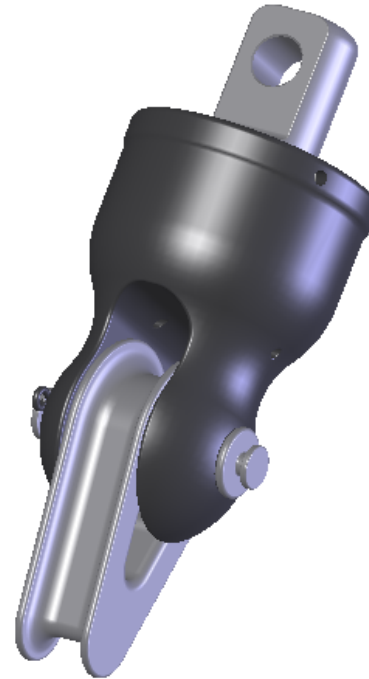
Diamètre
fond de réa/ Sheave: 80mm
Drisse de ϕ 18 max
max halyard 16mm



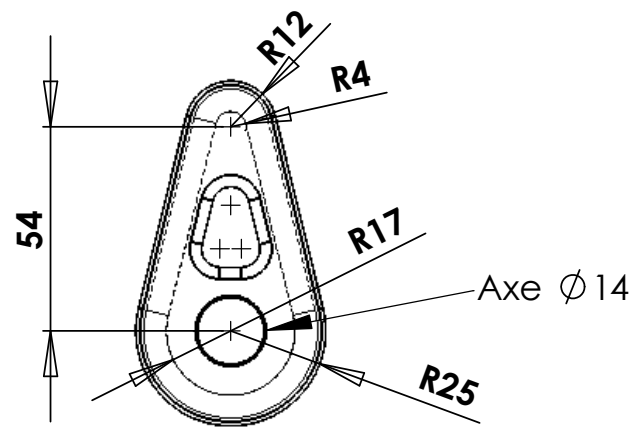
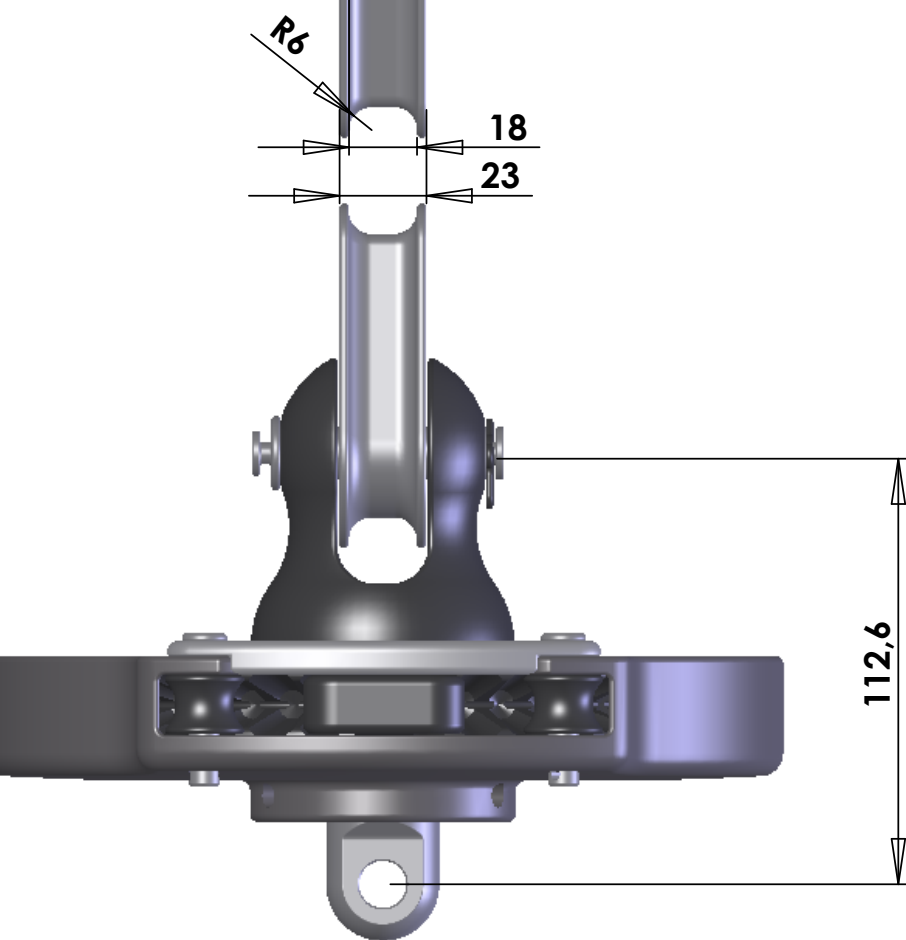
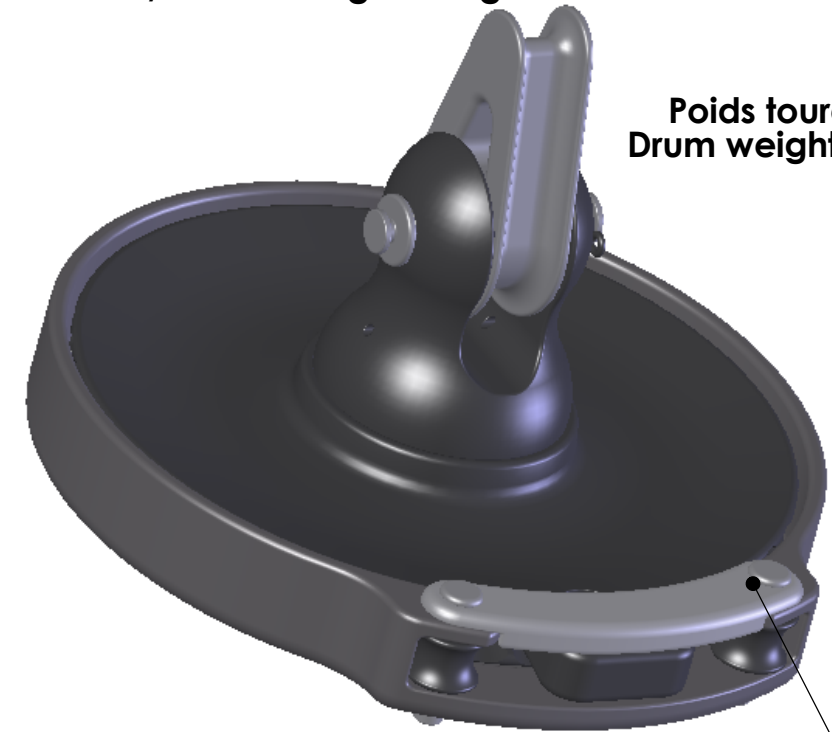
Poids poulie/Block weight: 691g



Poids emerillon/ Swivel weight: 830g



Poids tourelle/
Drum weight: 1550g



Détail crosse
Thimble

Charge de travail maxi/ Safe working load: 7500Kg Breaking 15T

Système rapide de mise en place du cordage
(breveté)/ Fast assembly of the loop line

DATE		MODIFICATIONS APORTEES			NOM	VISA	IND.
MATIERE ET ETAT		TOLERANCE GENERALE		EVOLUTION DU DOCUMENT			
TRAITEMENT; CARACTERISTIQUES MECANQUES		ETAT DE SURFACE GENERAL		DESS. PAR Le: M.C	MASSE	ECHELLE	
FINITION		PROTECTION		FOLIO			1/2
ATTACHEMENT		MATERIEL		KARVER®			
DESIGNATION		KF8					
CODE PRODUIT	K	CODE ENSEMBLE ou SOUS ENSEMBLE	K	CODE PIECE		FORMAT A3	