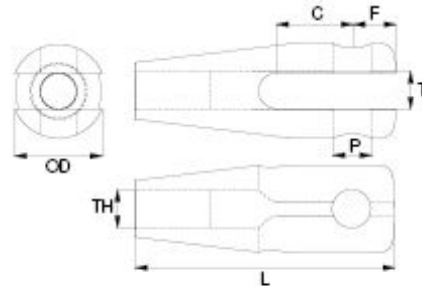


allspars

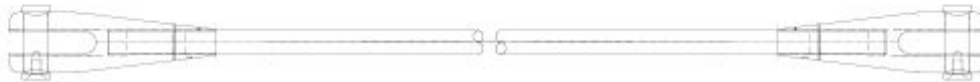
masts & rigging



ADJ = Total Adjustment

PART CODE	THREAD (Metric)	PIN P	T	C	F	ADJ	OD	L	0.2% kN *	UTS kN *
SBFM10	M10 x 1.50	10mm	10mm	20mm	11.2mm	20mm	25mm	68.7mm	26.1	40.6
SBFM12	M12 x 1.75	12mm	12mm	24mm	13.8mm	24mm	32mm	82.8mm	37.8	58.8
SBFM16	M16 x 2.00	16mm	15mm	32mm	18.4mm	32mm	40mm	109.9mm	70.7	109.9
SBFM20	M20 x 2.50	20mm	19mm	40mm	23.0mm	40mm	50mm	137.5mm	110.3	171.5
SBFM24	M24 x 3.00	24mm	24mm	48mm	27.6mm	48mm	60mm	165.6mm	158.9	247.1
SBFM27	M27 x 3.00	27mm	26mm	54mm	31.1mm	54mm	70mm	185.9mm	206.6	321.3
SBFM30	M30 x 3.50	30mm	29mm	60mm	34.5mm	60mm	75mm	206.5mm	252.6	485.8
SBFM33	M33 x 3.50	33mm	32mm	66mm	38.0mm	66mm	80mm	227.3mm	312.3	571.9
SBFM36	M36 x 4.00	36mm	34mm	72mm	41.4mm	72mm	90mm	247.4mm	367.7	638.2
SBFM39	M39 x 4.00	39mm	36mm	78mm	44.9mm	78mm	100mm	266.7mm	439.2	784.7

Sizes above M39 also available - please contact us for further details.
*In accordance with BS5950-1:2000 and EN 1993-1-8:2005



SBS-450 Bars are generally used on :

- Membrane Structures
- Lightweight Steel Structures
- Footbridges
- Glass Facades



PART CODE	THREAD (Metric)	ULTIMATE STRESS kN *	YIELD STRESS kN *	STRESS AREA mm ²	YIELD LOAD kN *	ULTIMATE LOAD kN *
SBM10	M10 x 1.50	700	450	58	26.1	40.6
SBM12	M12 x 1.75	700	450	84	37.8	58.8
SBM16	M16 x 2.00	700	450	157	70.7	109.9
SBM20	M20 x 2.50	700	450	245	110.3	171.5
SBM24	M24 x 3.00	700	450	353	158.9	247.1
SBM27	M27 x 3.00	700	450	459	206.6	321.3
SBM30	M30 x 3.50	700	450	561	252.6	485.8
SBM33	M33 x 3.50	700	450	694	312.3	571.9
SBM36	M36 x 4.00	700	450	817	367.7	638.2
SBM39	M39 x 4.00	700	450	976	439.2	784.7

*In accordance with BS5950-1:2000 and EN 1993-1-8:2005